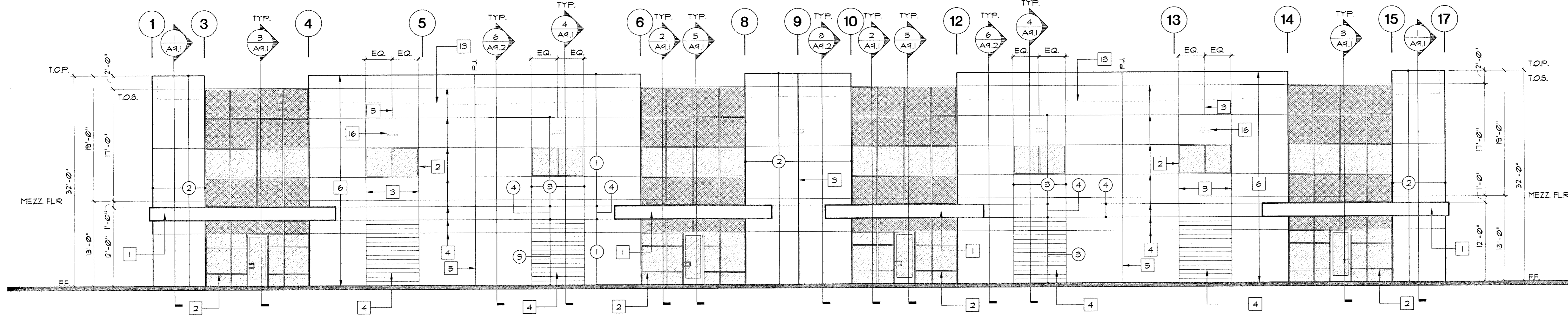
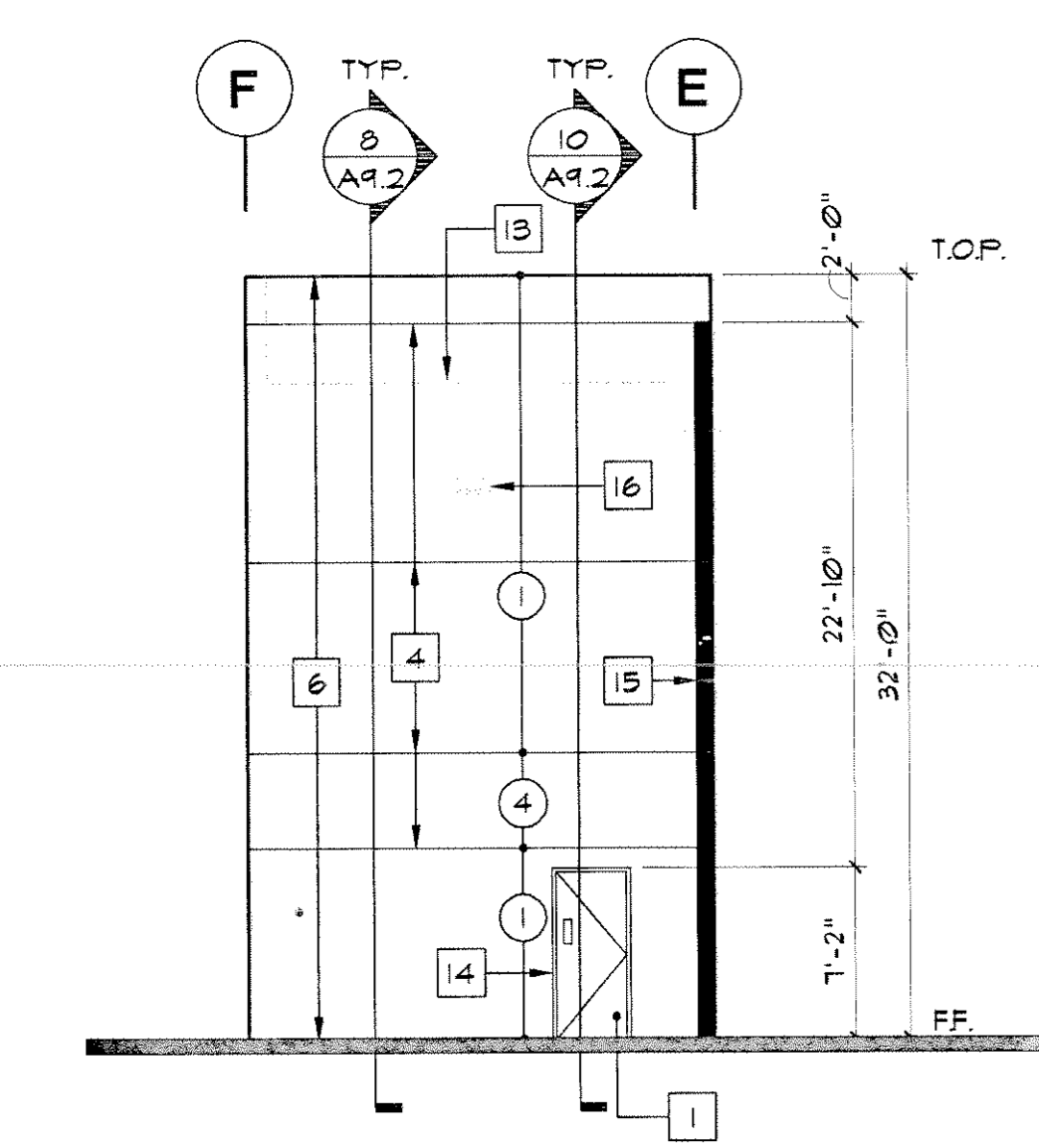


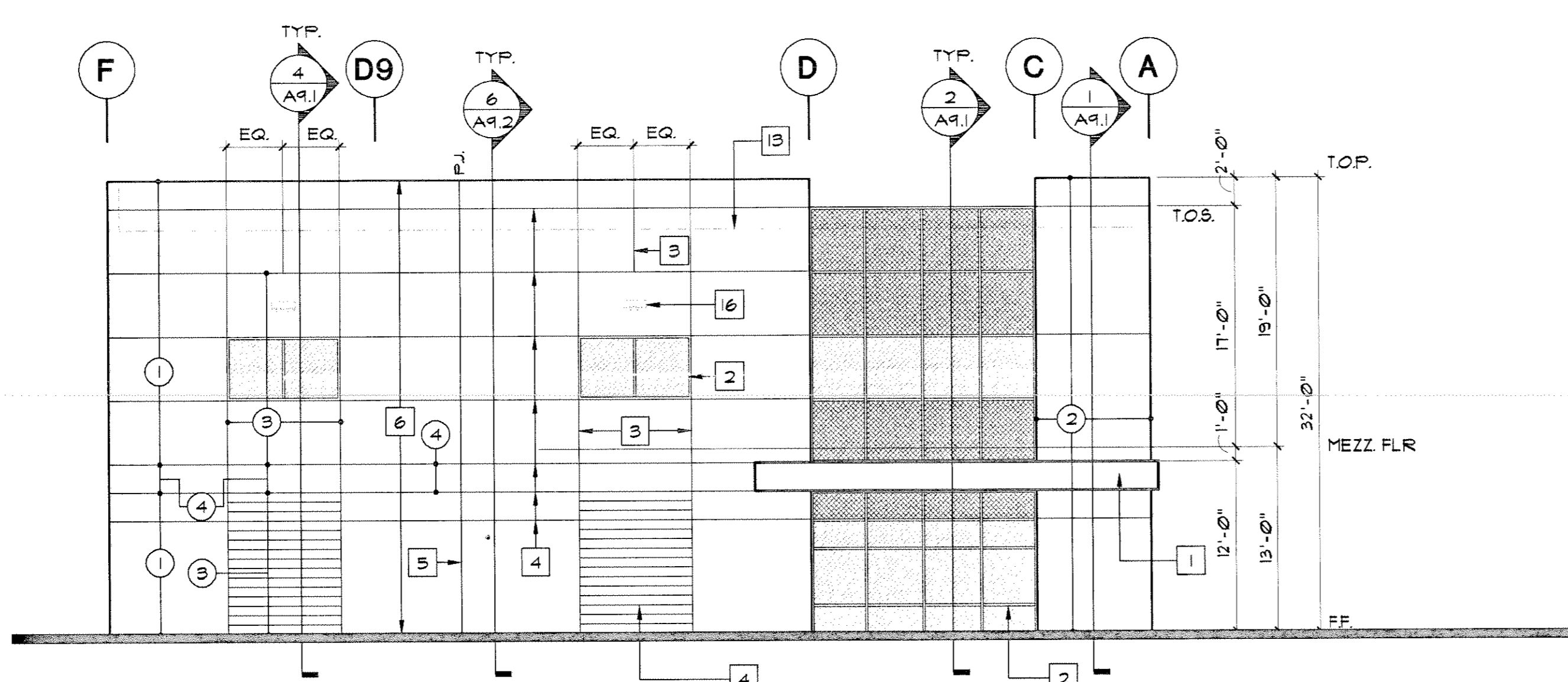
A WEST ELEVATION
SCALE - 1/8" = 1'-0"



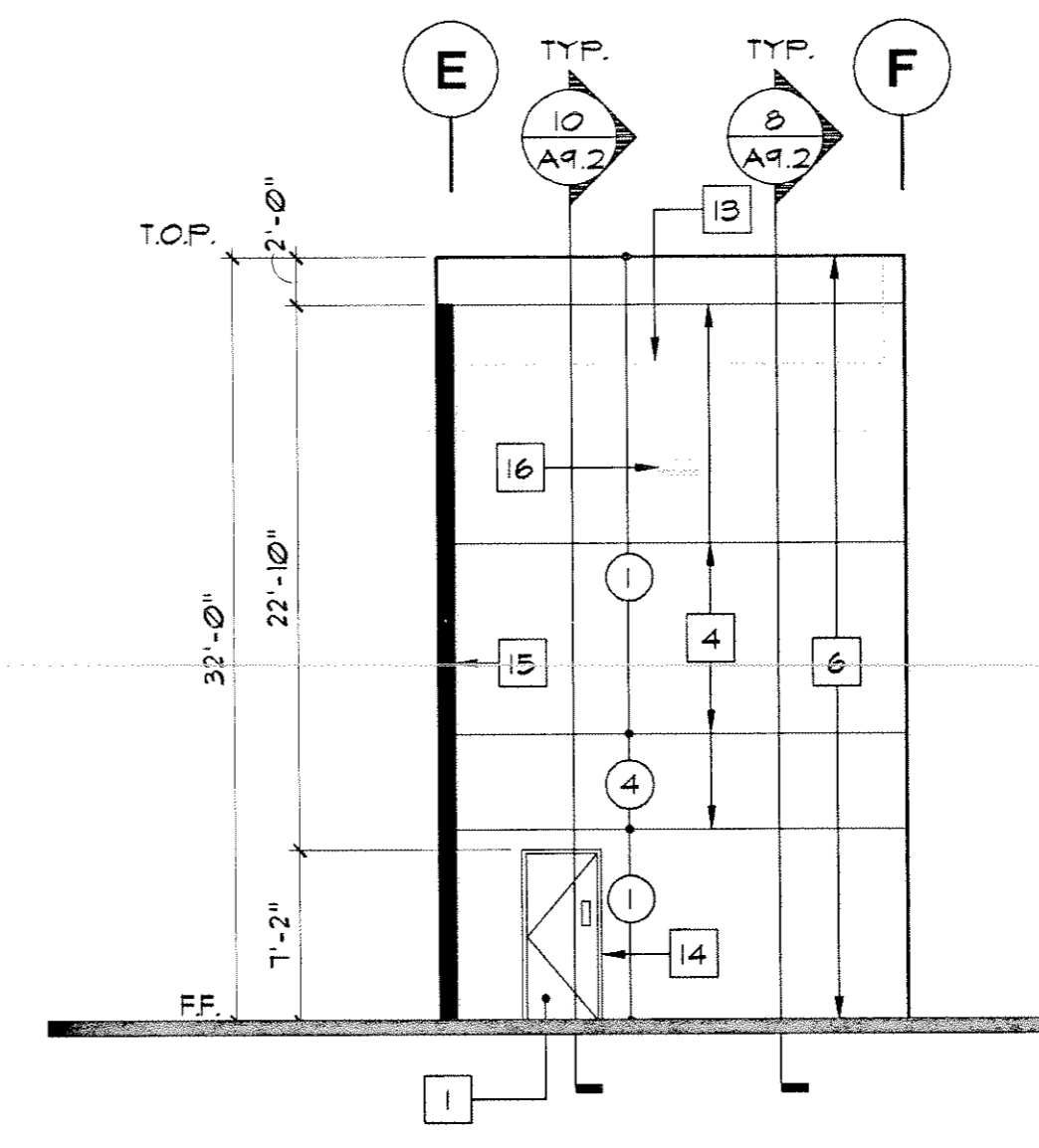
B SOUTH ELEVATION
SCALE - 1/8" = 1'-0"



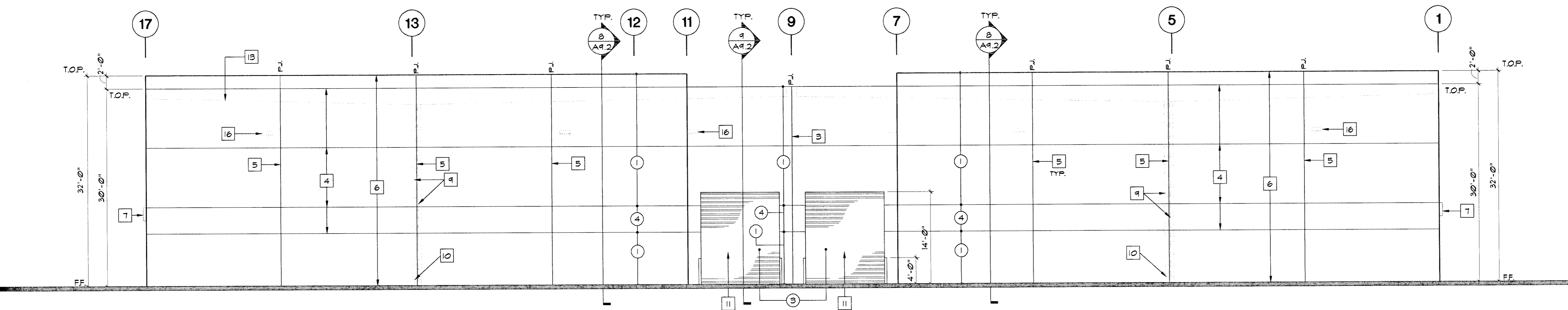
E INLET WEST ELEVATION
SCALE - 1/8" = 1'-0"



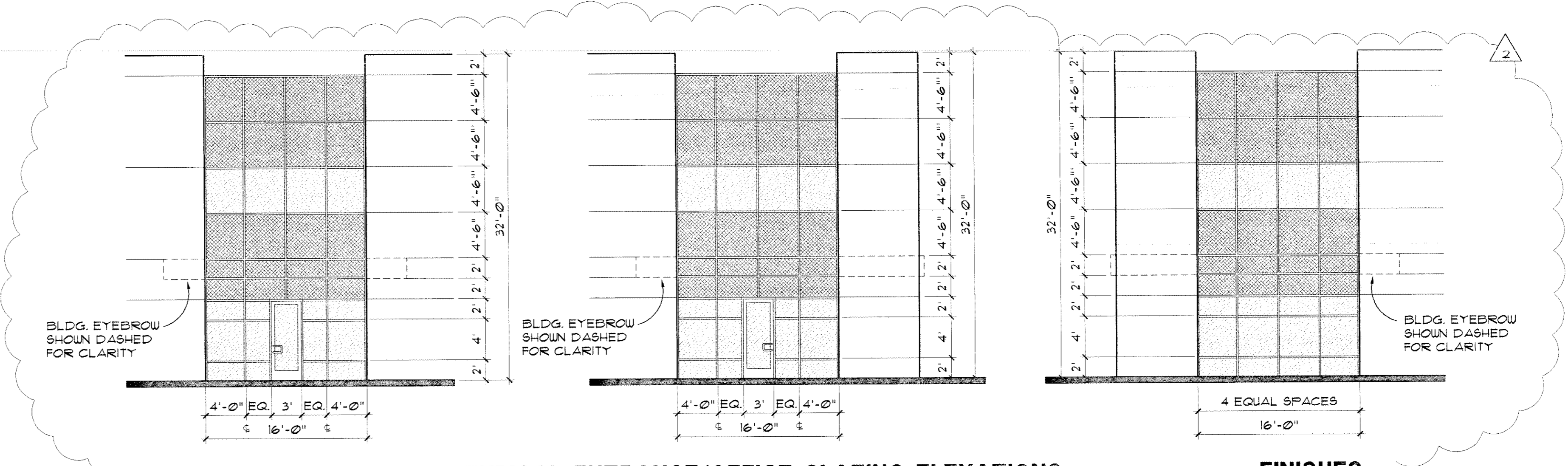
C EAST ELEVATION
SCALE - 1/8" = 1'-0"



F INLET EAST ELEVATION
SCALE - 1/8" = 1'-0"



D NORTH ELEVATION
SCALE - 1/8" = 1'-0"



TYPICAL ENTRANCE/OFFICE GLAZING ELEVATIONS BUILDINGS 1, 2, 9 & 10
SCALE - 1/8" = 1'-0"

FINISHES:

- PAINT:**
- 1 FIELD 1 COLOR: VISTA PAINT COLOR: 8460 BRIDAL WREATH
 - 2 FIELD 2 COLOR: VISTA PAINT COLOR: 8006 TUSCAN TERRACOTTA
 - 3 ACCENT 1 COLOR: VISTA PAINT COLOR: 8458 SAIL CLOTH
 - 4 ACCENT 2 COLOR: VISTA PAINT COLOR: 8455 TROPICAL TAN

- NOTES:**
- 1. EXTERIOR CONCRETE SHALL BE PAINTED WITH VISTA PAINT DURATONE (2000) ACRYLIC FLAT FINISH COLOR COAT OVER UNIFORM II (4600) ACRYLIC EPOXY PRIMER COAT OR APPROVED EQUAL.
 - 2. CONCRETE PANELS BEHIND SPANDRAL GLAZING SHALL BE PAINTED FLAT BLACK, PRIOR TO INSTALLATION OF STOREFRONT SYSTEM.

STORE FRONT SYSTEM:

ARCADIA OFFSET SYSTEM OR EQUAL COLOR: AB-1 LIGHT CHAMPAGNE SHOP DUGS TO BE SUBMITTED TO ARCHITECT

GLAZING:

UNLESS OTHERWISE NOTED ALL GLAZING IS TEMPERED

VISION GLASS: PPG SOLARCOOL (1) AZURIA 1/4" REFLECTIVE GREEN (COATING ON OUTBOARD * SURFACE) OR EQUAL

SHADING COEFFICIENT: .36
SOLAR HEAT GAIN: .31
LIGHT TO SOLAR GAIN: .84
U-VALUE: .103 (WINTER) .93 (SUMMER)

SPANDRAL GLASS: PPG SOLARCOOL (1) AZURIA 1/4" REFLECTIVE GREEN (COATING ON OUTBOARD * SURFACE) OR EQUAL

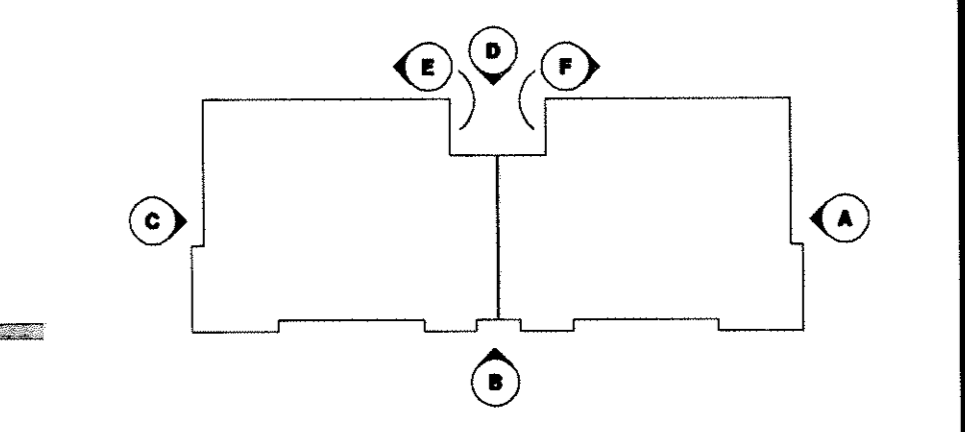
SHADING COEFFICIENT: .36
SOLAR HEAT GAIN: .31
LIGHT TO SOLAR GAIN: .84
U-VALUE: .103 (WINTER) .93 (SUMMER)

KEY NOTES

- 1 SHEET METAL FACADE EYEBROW, COLOR TO MATCH STOREFRONT MULLIONS
- 2 ALUMINUM STOREFRONT SYSTEM, TYP.
- 3 VERTICAL PANEL REVEAL, TYP.
- 4 HORIZONTAL PANEL REVEAL, TYP.
- 5 WALL PANEL JOINT, TYP.
- 6 CONCRETE WALL PANEL, TYP.
- 7 BLDG. FACADE EYEBROW BEYOND.
- 8 LINE OF ROOF BEYOND, TYP.
- 9 INTERIOR ROOF 4 OVERFLOW DRAIN LINES, TYP.
- 10 ROOF DRAIN PENETRATION THROUGH WALL PANEL, 6" ABOVE FINISH FLOOR, TYP.
- 11 ROLL-UP LOADING DOORS
- 12 8'-0" HIGH CONCRETE SCREEN WALL PANEL
- 13 LINE OF ROOF BEYOND
- 14 MAIN DOOR, SEE FLOOR PLANS
- 15 WALL PANEL IN SECTION, TYP.
- 16 WALL MOUNTED AREA LIGHT, SEE ELEC. DUGS, TYP.

GLAZING LEGEND:

- TEMPERED VISION GLASS
 - TEMPERED SPANDRAL GLASS
- T.O.P. - TOP OF PARAPET
T.O.S. - TOP OF STORE FRONT PARAPET



KEY PLAN

FOR CONSTRUCTION

PROJECT ADDRESS:

NEW BUILDINGS FOR
J&S DEVELOPMENT, LLC.
NORTHWEST CORNER OF MINTHORN & CHANEY ST.
LAKE ELSINORE, CALIFORNIA

PROJECT DATES:

1ST SUBMITTAL	12-21-05
2ND SUBMITTAL	12-1-06
3RD SUBMITTAL	12-21-06

SHEET TITLE:

BLDG. 1 + 2 EXTERIOR ELEVATIONS

REVISIONS

PLAN CHECK CORR.	10-19-06
OWNER CHANGES & COORD.	10-19-06
COORD. CIVIL	12-6-06
PLAN CHECK CORR.	12-20-06

DATE
SCALE 1/8" = 1'-0"
DRAWN BY DAP/RON/LEE
JOB NUMBER 2004-25

SHEET NUMBER

A-8.1